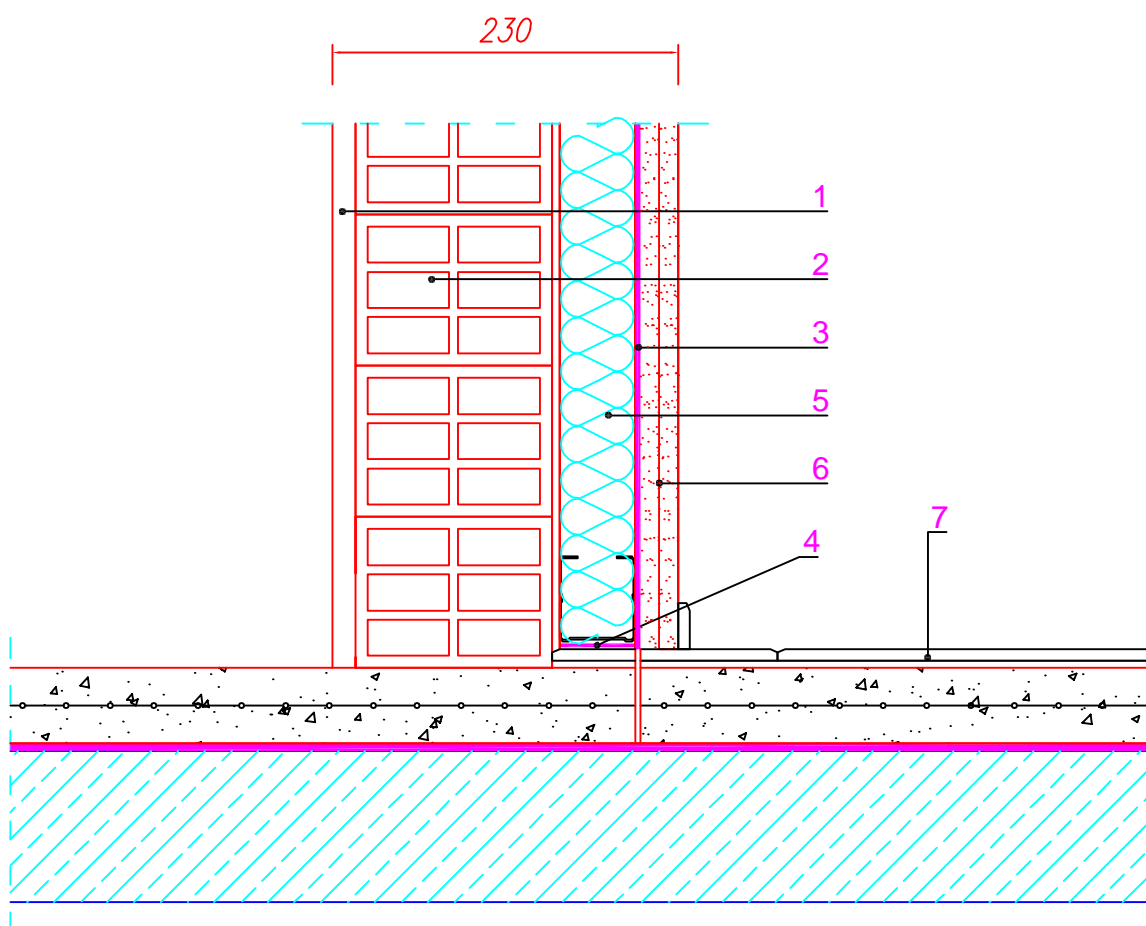


R_w(C;C_{tr})dB

55 (-2 ; -8)

1. Plaster coat
2. Double hollow brick (th: 14cm)
3. TECSOUND® SY 70
4. TECSOUND® S 50 BAND
5. Mineral wool (th: 50mm; d:40kg/m³)
6. 2 layers of 13mm gypsum plasterboard
7. Floor



REI
www.reico.lt
Tel./Phone +370 615 272 82

Number:

TR – 2b

Title:

Join with floor