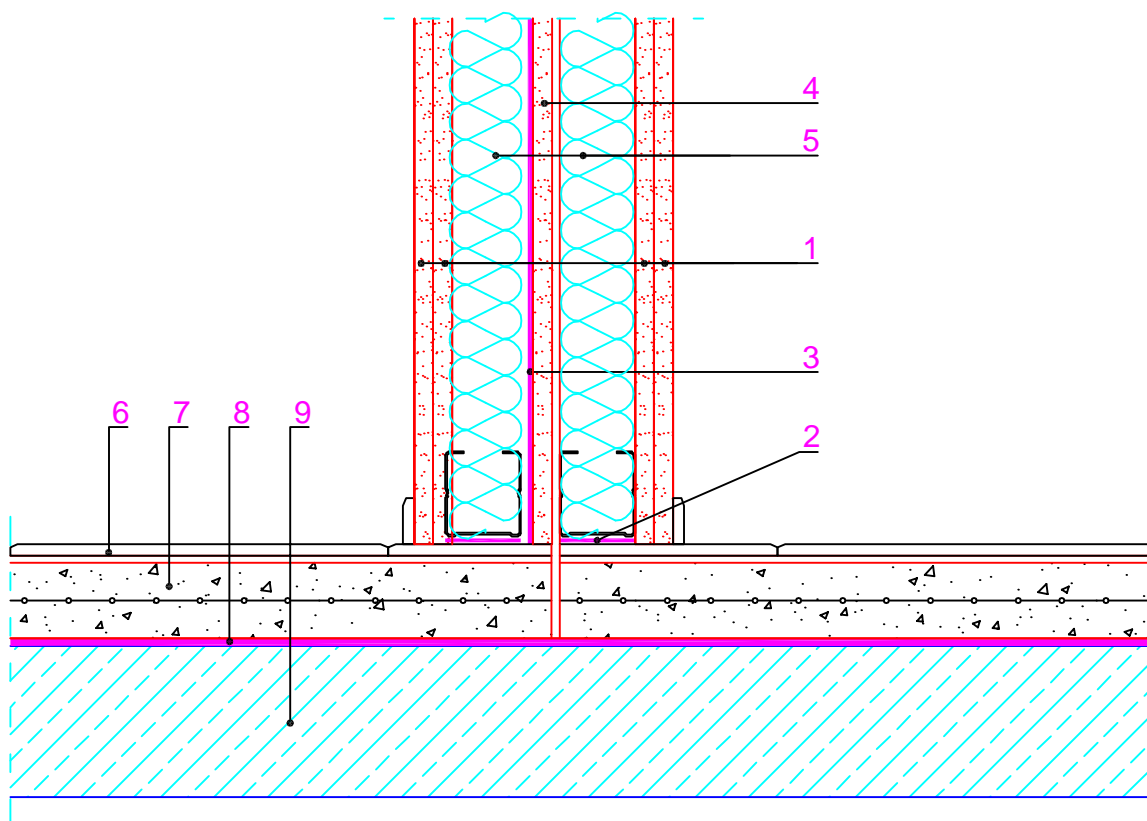


R_w(C;C_{tr})dB

60 (-5 ; -13)

1. 2 layers of 13mm gypsum plasterboard
2. TECSOUND® S 50 BAND
3. TECSOUND® SY 50
4. Layer of 13mm gypsum plasterboard
5. Mineral wool (th: 40mm; d: 15kg/m³)
6. Flooring
7. Reinforced screed
8. TEXSILEN PLUS 5 mm/Texsimpact 5mm
9. Framework



REI

www.reico.lt

Tel./Phone +370 615 272 82

Number:

PM – 5b

Title:

Join with floor