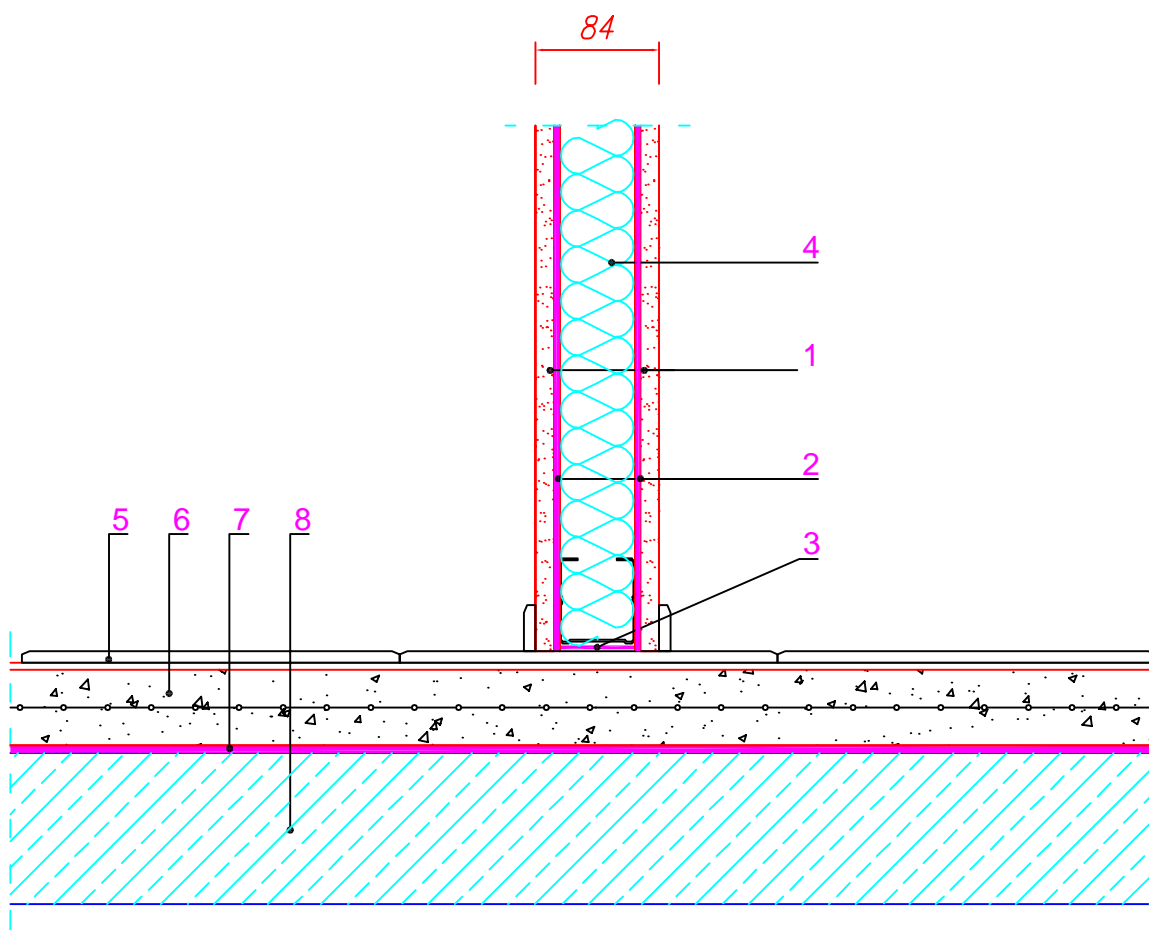


1. Layer of 15 mm gypsum plasterboard
2. TECSOUND® SY 70
3. TECSOUND® S 50 BAND
4. Mineral wool (th: 50mm; d: 40kg/m³)
5. Flooring
6. Reinforced screed
7. Teksimpact 5mm/Texsilen Plus 5mm
8. Framework

**REI**

www.reico.lt

Tel./Phone +370 615 272 82

Number:

PI - 4b

Title:

Join with floor