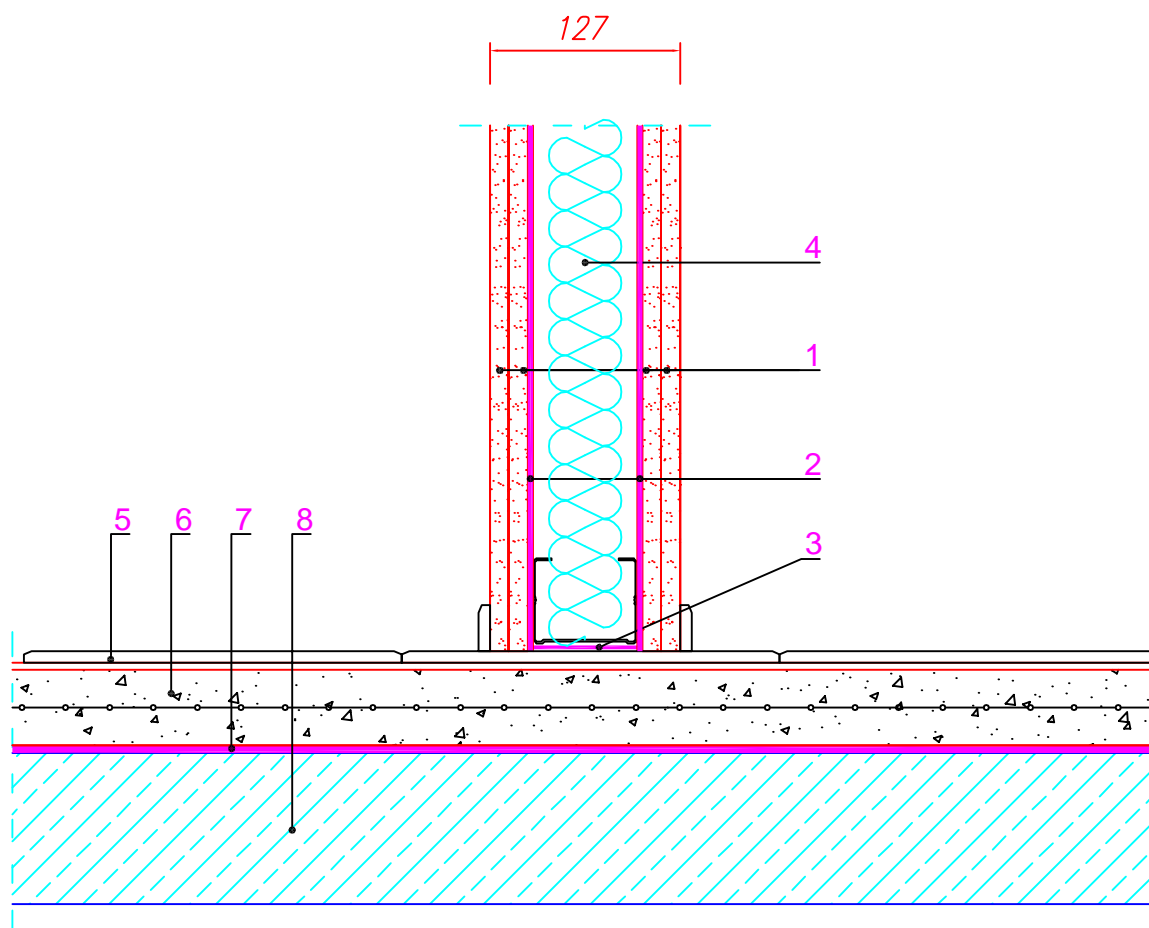


R_w(C;C_{tr})dB

59,9 (-3 ; -9)

1. 2 layers of 13 mm gypsum plasterboard
2. TECSOUND®SY50
3. TECSOUND®S 70 BAND
4. Mineral wool (th: 70 mm, d: 40kg/m³)
5. Flooring
6. Reinforced screed
7. Texsimpact 5mm/Texsilen Plus 5mm
8. Framewrok



REI

www.reico.lt

Tel./Phone +370 615 272 82

Number:

PI – 3b

Title:

Join with floor