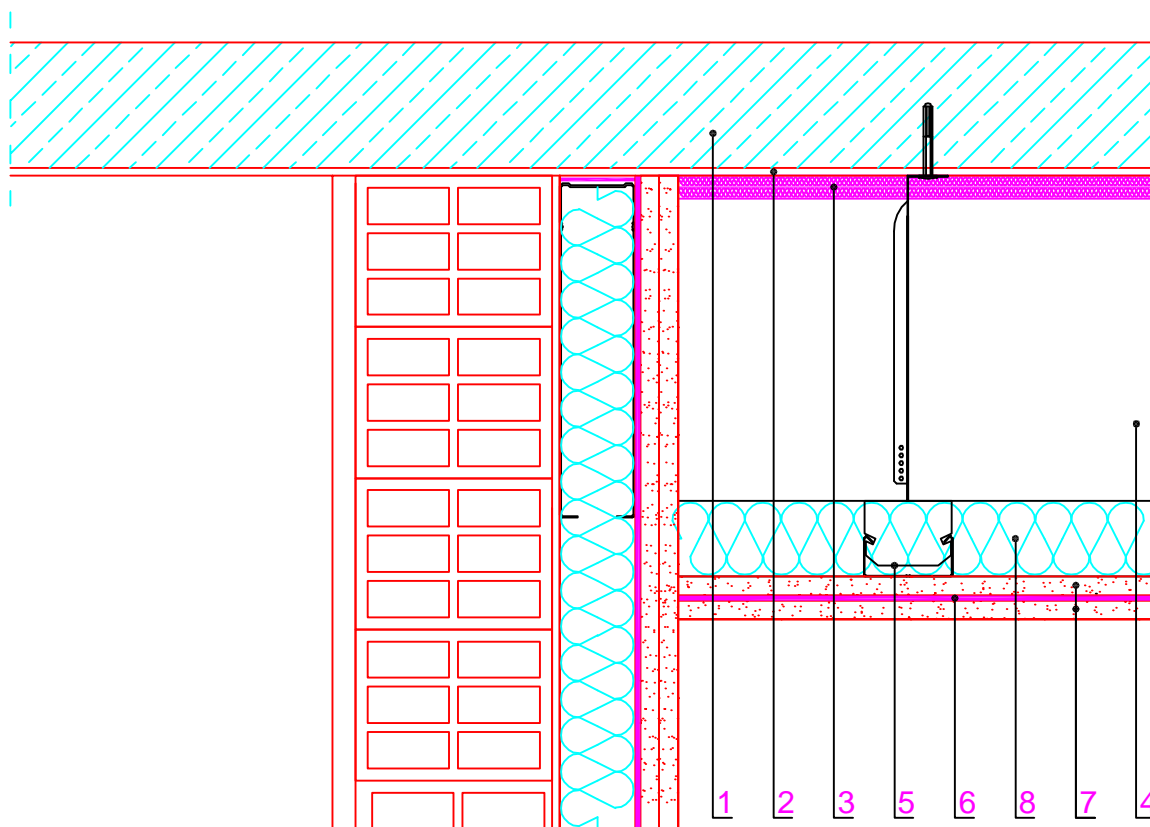


R_w(C;C_{tr})dB

85 (-6 ; -11)



1. Framework
2. Plaster coat
3. TECSOUND® FT 75
4. Air chamber (th: 200mm)
5. Dampers
6. TECSOUND® SY 70
7. 2 layers of 13mm gypsum plasterboard
8. Mineral wool (th: 50mm; d: 60kg/m³)



REI
www.reico.lt
Tel./Phone +370 615 272 82

Number:

FT – 2a

Title:

Join with ceiling