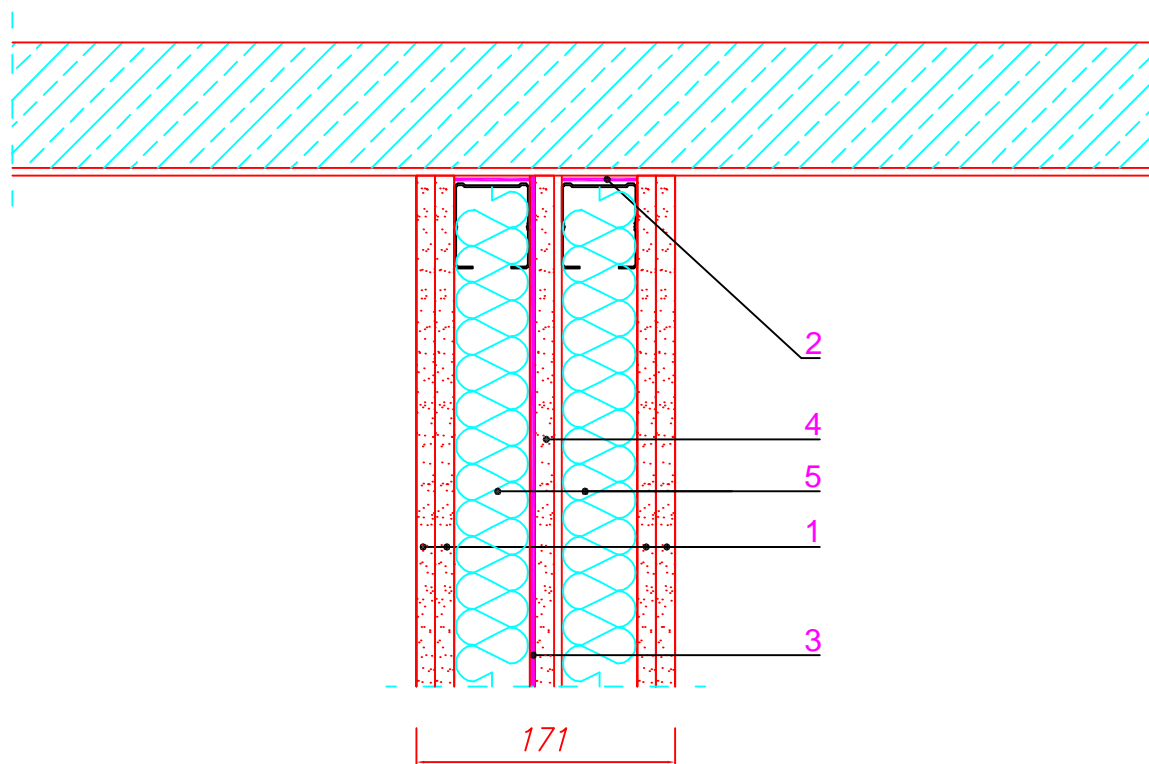


R<sub>w</sub>(C;C<sub>tr</sub>)dB

60 (-5 ; -13)



1. 2 layers of 13 mm gypsum plasterboard
2. TECSOUND® S 50 BAND
3. TECSOUND® SY 50
4. Layer of 13 mm gypsum plasterboard
5. Mineral wool (th: 40mm; d: 20kg/m<sup>3</sup>)



**REI**  
www.reico.lt  
Tel./Phone +370 615 272 82

Number:

PM – 5a

Title:

Join with ceiling